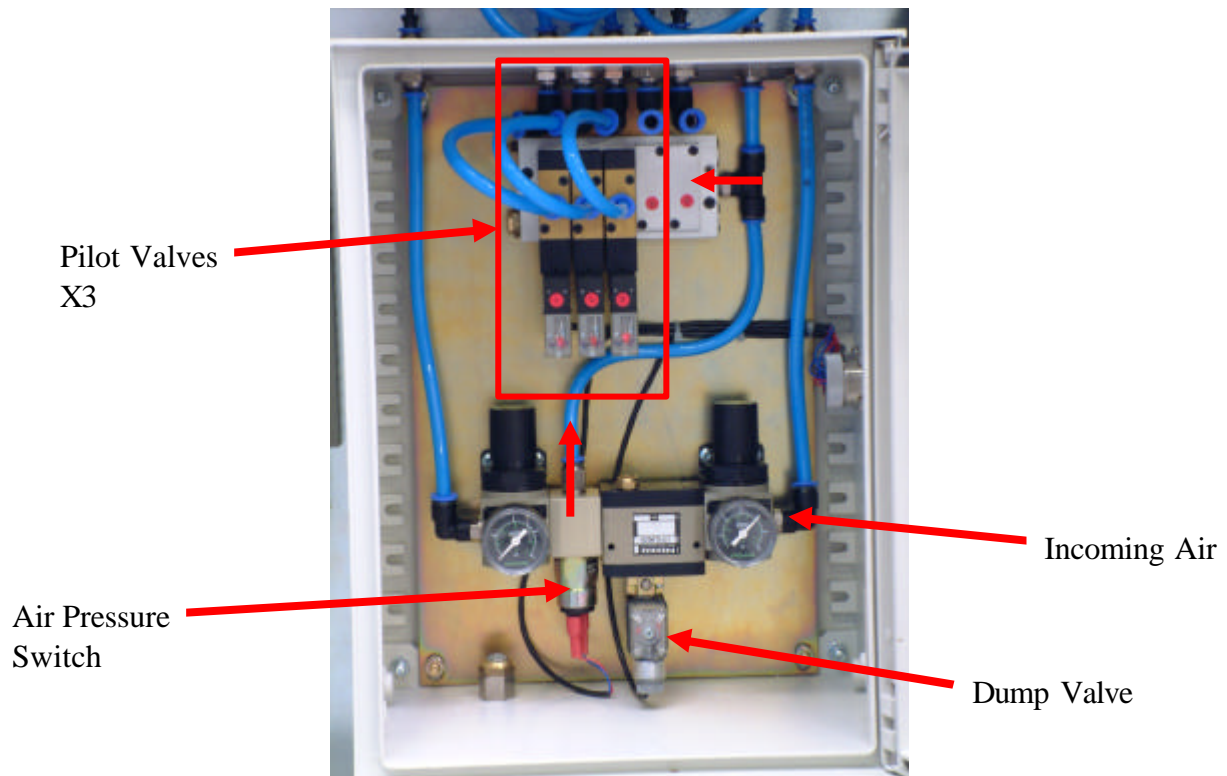


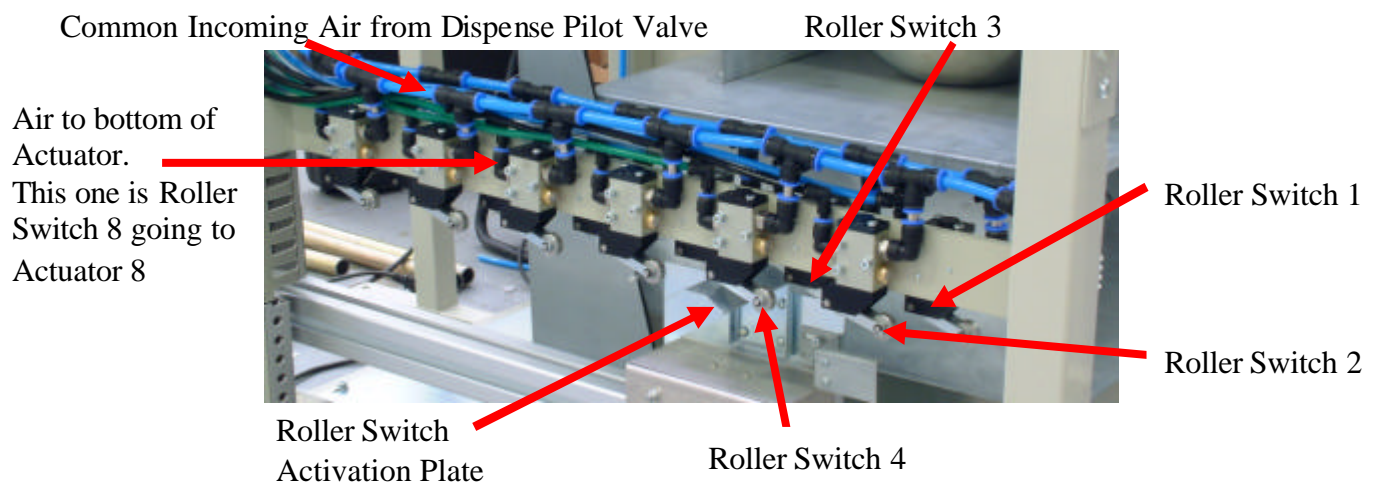
Fault Finding Air Delivery on LV Systems.

The LV Dispense Valve has air supplied to the Dispense Valve via three Pilot Valves and a Roller Switch. The Pilot Valves are in the Air Cabinet, the Roller Switches are mounted on the left hand side of the LV Inner Frame.



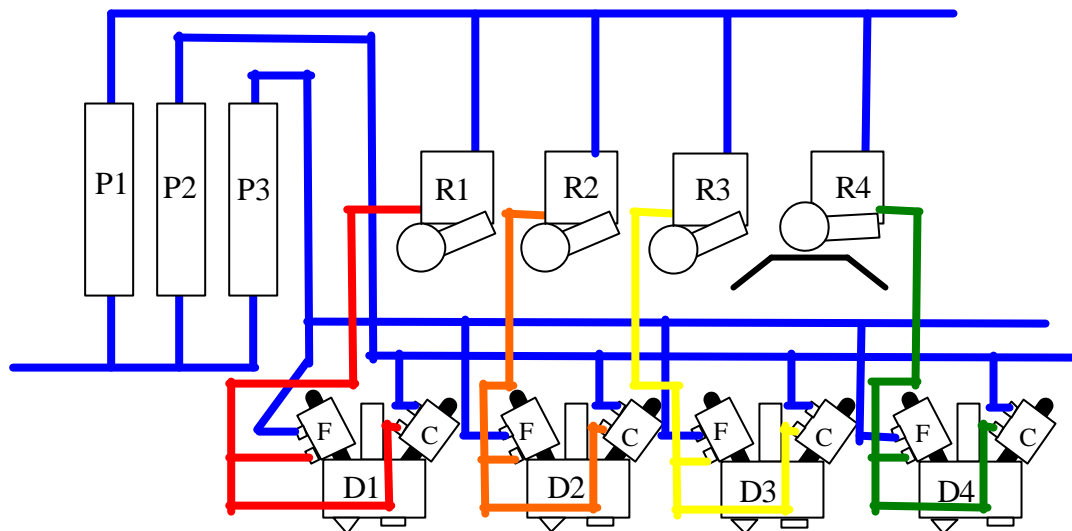
The air on one of the Dispense Pilot Valves goes to the Roller Switches, this is the Dispense Line.

The other two are used to disable either Coarse or Fine Actuators. If air is applied to the top of the Fine Actuator, and to the bottom of both, only the Coarse will open. If air is switched to the top of the Coarse Actuator, the Fine will open.



The Roller Switch is Normally Closed, air goes in but not out. When Balance moves to a certain Dispense Valve, the Roller Switch Activation Plate turns the Roller Switch to the Open condition allowing air to the bottom of the Dispense Valve Actuators. So the Dispense Pilot Valve air is common to Roller Switches, but only activates one Roller Switch at a time, and this will be the Dispense Valve over the Balance at the time.

Overview of air System



From the diagram above:

P1 is the common Dispense Pilot Valve delivering air to all the Roller Switches.
P2 is the common Coarse Disable Pilot Valve delivering air to the tops of the Coarse Actuators.

P3 is the common Fine Disable Pilot Valve delivering air to the tops of the Fine Actuators.

R1-4 are Roller Switches, D1-4 are Dispense Valves.

R1, when activated, will deliver air to the bottom of D1 Actuators.

R2, when activated, will deliver air to the bottom of D2 Actuators.

R3, when activated, will deliver air to the bottom of D3 Actuators.

R4, when activated, will deliver air to the bottom of D4 Actuators.

And so on.

If R4 is activated (as above) air is delivered to D4, if P3 is on, ink would be delivered through the Coarse Feed, if P2 is on, ink would be delivered through the Fine Feed.

To determine if the Roller Switch, Pipe Work, or Dispense Valve is at fault, check for air at the infeed to the Roller Switches. When the Roller Switch is Activated, check the outfeed from the Roller Switches, and at both the tops and bottoms of the Actuators. If air is being delivered to the Actuators Correctly, the Actuator is faulty.

The air will only be on after a reset, check the Pilz Relay has all three LED's lit, and the Dump Valve LED is lit.