

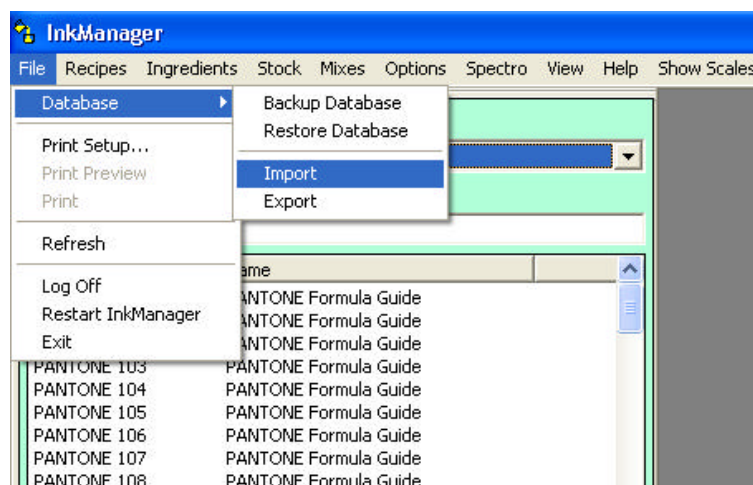
## Importing a new Database or Series into InkManager

Importing a new Database is the common method used to provide formulations that are colour matched to a specific Ink Range or onto a material.

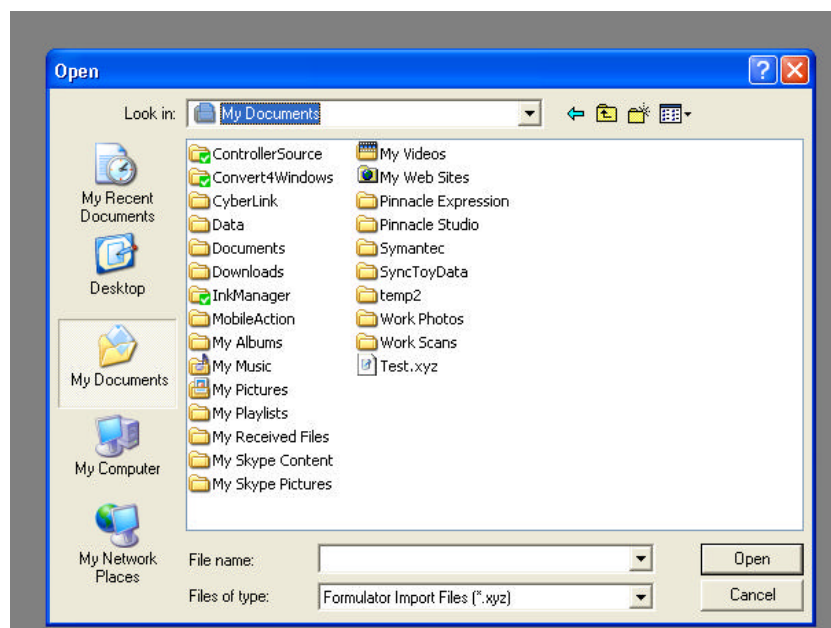
Importing a new Database or Series into InkManager will overwrite an existing Series where the Series name and Recipe References within are the same but will add new Recipes to an existing Series.

The Import file must have an extension of .XYZ. The format must also adhere to the Vale-Tech Database Standard.

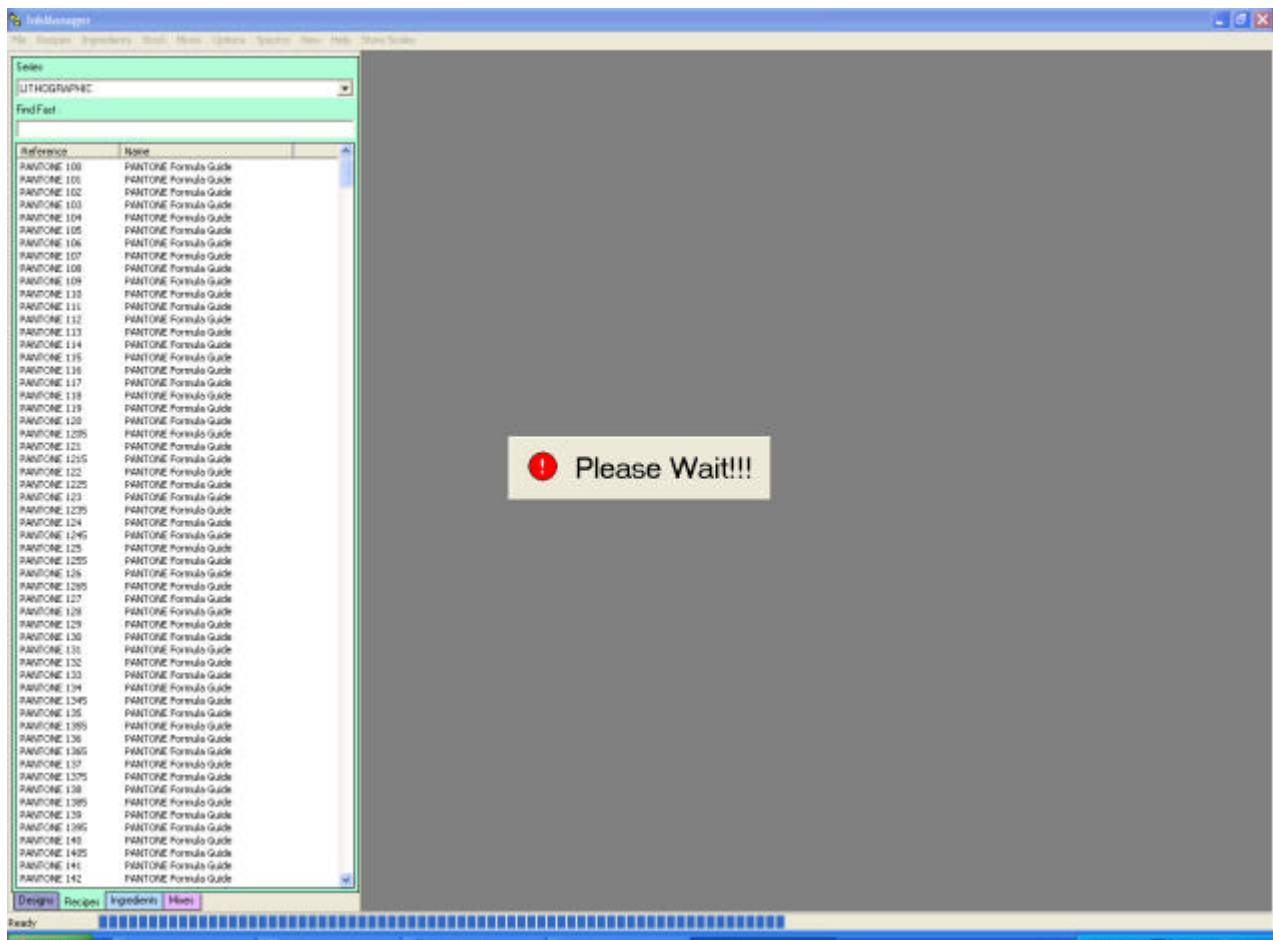
To Import a Database Series into InkManager: launch InkManager, Log On with Import Privileges, from File, Database, click on Import shown below:



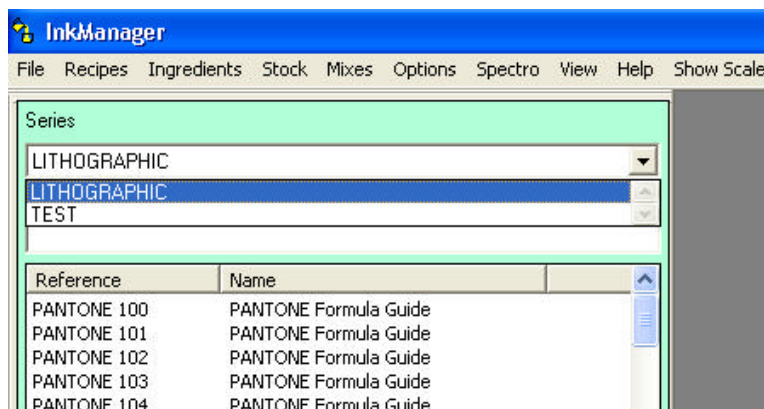
The Open Window will be displayed allowing the file to be found. The file may have been provided on a Floppy Disk, CDROM, USB Memory Stick or emailed, or just copied to a specific location on the Hard Drive on the PC. Locate the file in the usual way, in our example we have copied the file into My Documents and named it Test.XYZ as shown:

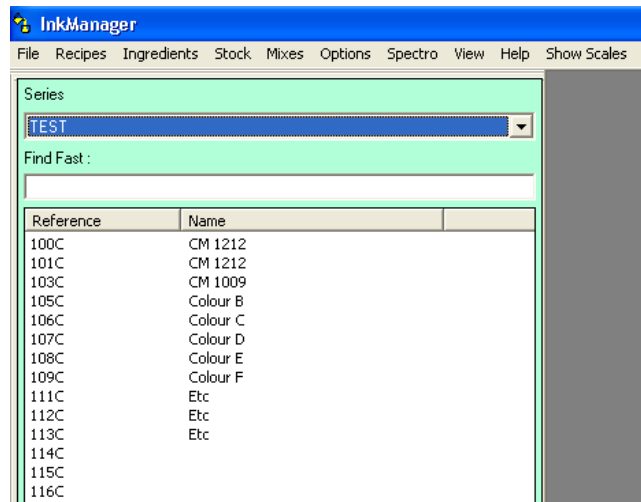


Click on the .XYZ file and click Open, or just double click the .XYZ file. This will start the Import of the file; blue progress markers will be shown at the bottom of the screen as the file is imported.



When the Import is finished the progress bar will be empty and the Please Wait!!! Message will close. Use the Series Drop-down Menu to open the new Series as shown:





The Formulations will be shown in the Database panel, if they cannot, check that the Recipes Tab is selected at the bottom of the Database Panel. All Ingredients found within the Recipes in the Database will be listed in the Ingredients Tab.

Recipes can be blended on Integra's and Manual Scales immediately, for Dispensers to recognise the Ingredients in order to Dispense Formulations, the following must be set-up. The Valve Configuration must have the Ingredient Reference entered exactly as it appears in the Ingredients Database panel, into the relevant Supply Container Tab's 'Name' text entry box. This is to identify to the software were the ink is.

For further information of the Valve Configuration Window, see the User Manual or Technical Bulletin01.