

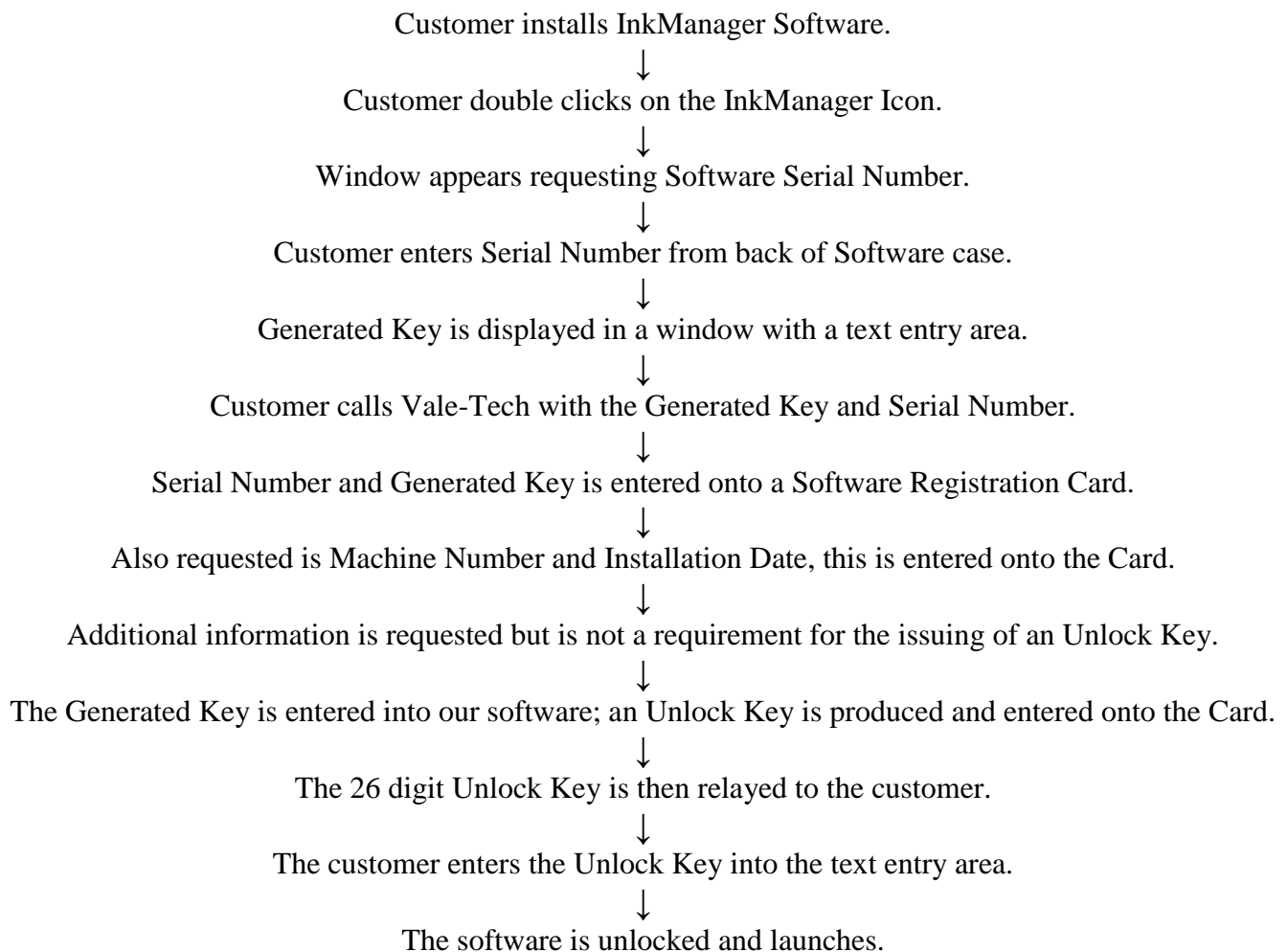
InkManager Software Installation and Registration.

Introduction.

This is the procedure to be followed when registering the New InkManager software.

Overview.

The New InkManager software requires entry of a 26 digit Unlock Key before the software can be run for the first time, after this code has been entered, the software will continue to launch without further user entry of the code. The Generated Key produced by InkManager should be forwarded to Vale-Tech along with the Serial Number and date of installation (if known). Below shows the sequence of events involved in registering InkManager:



The procedure is the same for an upgrade from an older version of InkManager, the upgrade is installed, and upon launching the software for the first time the Serial Number is requested and the above procedure is to be followed. After the Unlock Code is successfully entered, the software will launch and will not be requested again even after subsequent upgrades. The following is a step by step guide to installing and registering InkManager.

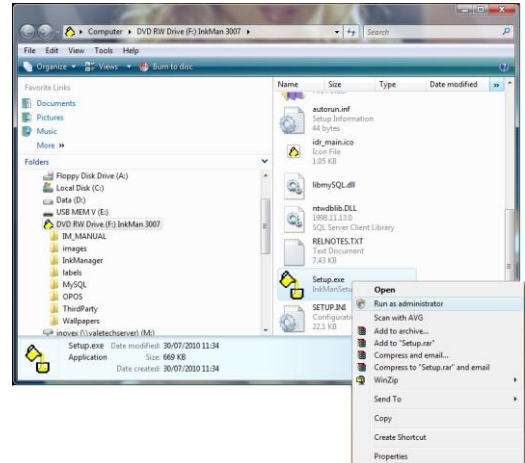
InkManager Software Installation and Registration.

Installing InkManager.

Windows7 only.

Put the InkManager CD into the CDROM. The installation program will Auto Run and the AutoPlay window will open, click on 'Open folder to view file' when the folder opens, scroll down to the Setup.exe file, right click on it, click on the Run as Administrator option highlighted opposite. InkManager will launch as shown below.

If Auto Run is not enabled, use Explorer or My Computer to locate the Setup.exe file and follow the example above. InkManager Setup will launch.



WinXP/2000 Professional.

Put the InkManager CD into the CDROM. The installation program will Auto Run and display the following screen:

If Auto Run is disabled, from Run in the Start menu: type '<drive Letter for CDROM>:\setup.exe' this will launch the Setup program and the screen opposite will be displayed.



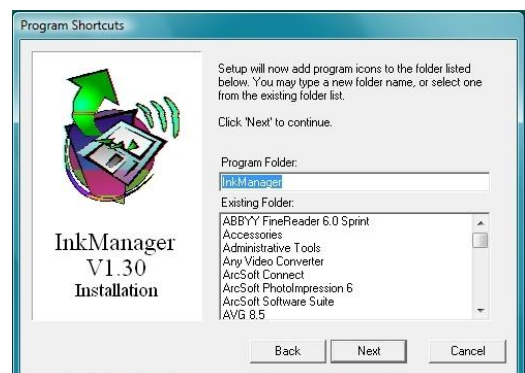
WinXP/2000 Professional and Windows7.

Click Next, the following screen is displayed:

If the software is to be installed in a directory other than the default directory, click on Browse to locate the required path, otherwise click on Next and the following screen will be displayed:



The Default Program Group is InkManager, if an alternative Program group for the program is required, overtype InkManager here, otherwise click Next.



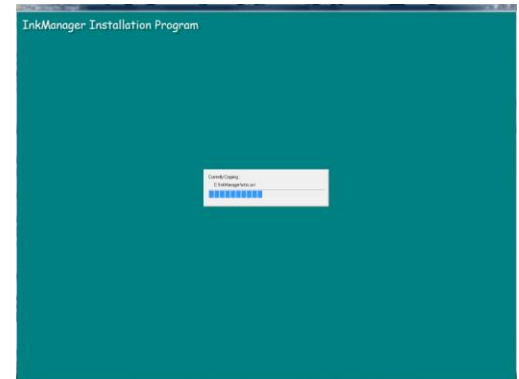
InkManager Software Installation and Registration.

InkManager can install the Database either on the local Hard Disk Drive or access a database on the networked machine, (pending a network connection), if this is a stand-alone machine, click 'Next'. If the database is to be accessed over a network, click on Remote Database, then browse the network for the machine that holds the Database.

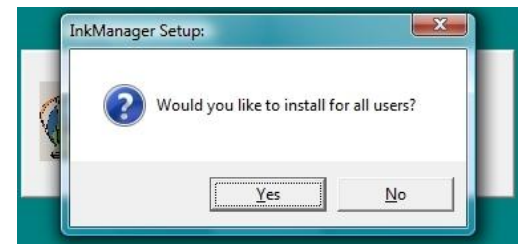
If this a a **First Time Install**, it is advisable to install InkManager as a standalone first, the network database can be configured in InkManager later. Click Next to continue.



During the installation progress is shown for each file copied. If this is the first time InkManager is installed MSDE will also be installed and a reboot during installation may be required. If this occurs re-start the system, do not removing the InkManager disk at this time, installation will continue after re-starting.



If the installation is on an NT based system, the following message will be displayed. Installing for all users will provide icons in each user configuration (All Users). Clicking on No will create icons in the current user account only.



This screen will be displayed when upgrading InkManager, click No to keep your old database (recommended when upgrading), click Yes to install a blank database deleting all your recipes when upgrading. If this is a First Time Install, this message should not appear unless a database is found.



At the end of the install, a re-start may be requested. InkManager may not launch correctly if this is not done. Re-start before progressing further with this procedure.

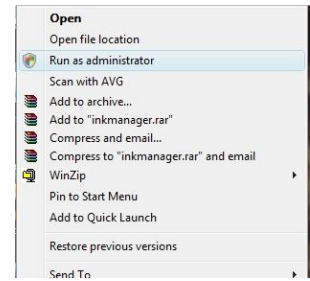


InkManager Software Installation and Registration.

Registering InkManager.

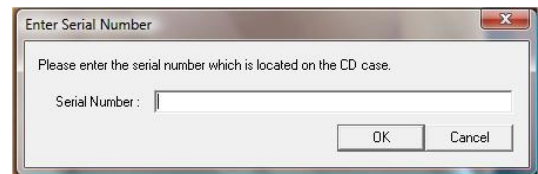
Windows7 only.

First time launch of InkManager, right click the InkManager icon, the menu opposite will be displayed, click the Run as administrator menu item highlighted, the Enter Serial Number window will be displayed as part of the registration process. A UK call or email is necessary to complete the unlock and registration process, if this is not possible at this time, click Cancel now.



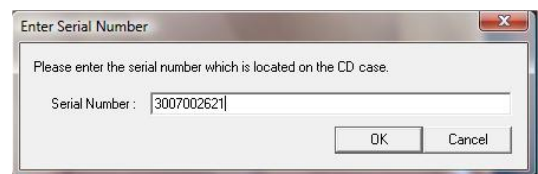
WixXP/2000 Professional.

Double click the InkManager icon on the desktop, if this is a fresh install or an upgrade of a previously un-registered InkManager the following window will be displayed as part of the registration process. A UK call or email is necessary to complete the unlock and registration process, if this is not possible at this time, click Cancel now.

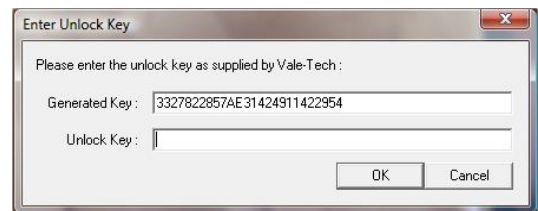


WinXP/2000 Professional and Windows7.

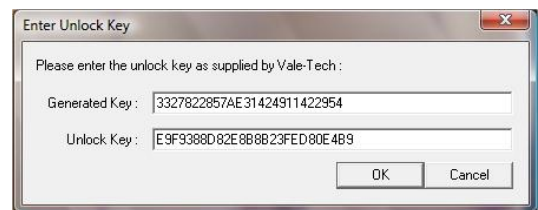
Enter the 10 digit numeric Serial Number; this should be on the back of the InkManager case and on the InkManager CD. Check the Serial Number is correct and click on 'OK'.



Call Vale-Tech on the number printed on the CD box, ask for InkManager Software Registration and have the 26 digit hexadecimal Generated Key ready. As part of registration additional information is required, please have the Machine Serial Number, Software Serial Number and Installation Date ready. Alternatively email the above information to support@vale-tech.co.uk.



A 26 digit Unlock Key will be provided, enter this into the text box as shown and click on 'OK'. This is a one **use only code**, it cannot be used on other or future re-installs, a new code is required each time. Upgrades of registered InkManagers do not require further activation.



With a correctly entered Unlock Key InkManager will continue to launch and display the following Logon screen. If this is the first time InkManager has been run, logon as 'Administrator', the password is Admin, this is case sensitive. Create some user logons with appropriate privileges and passwords for future logon. If this is an upgrade and the original Database was kept, all user accounts will be in place, however, new options in 'Privileges' will require setting.

