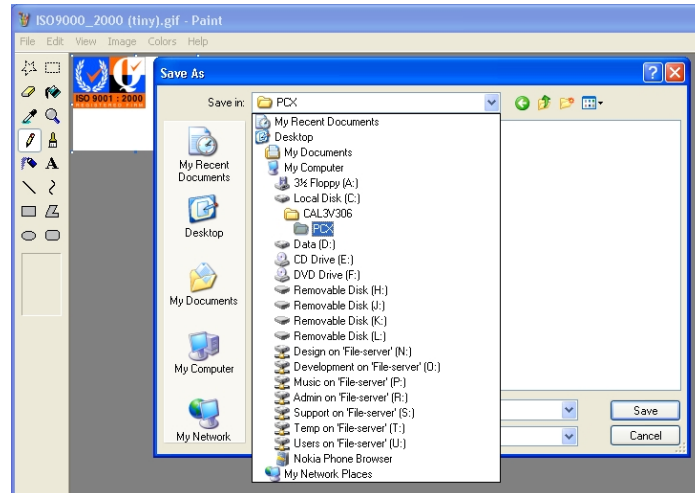
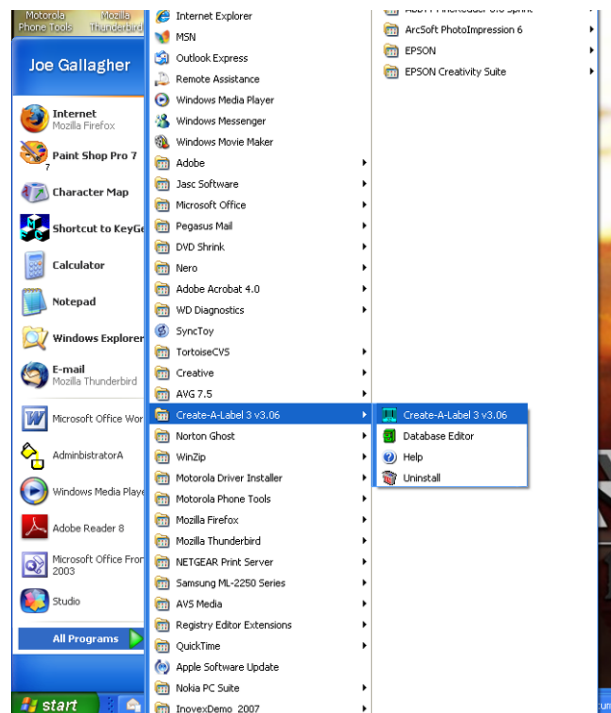


Inserting a Graphic into a TLP2844 Label

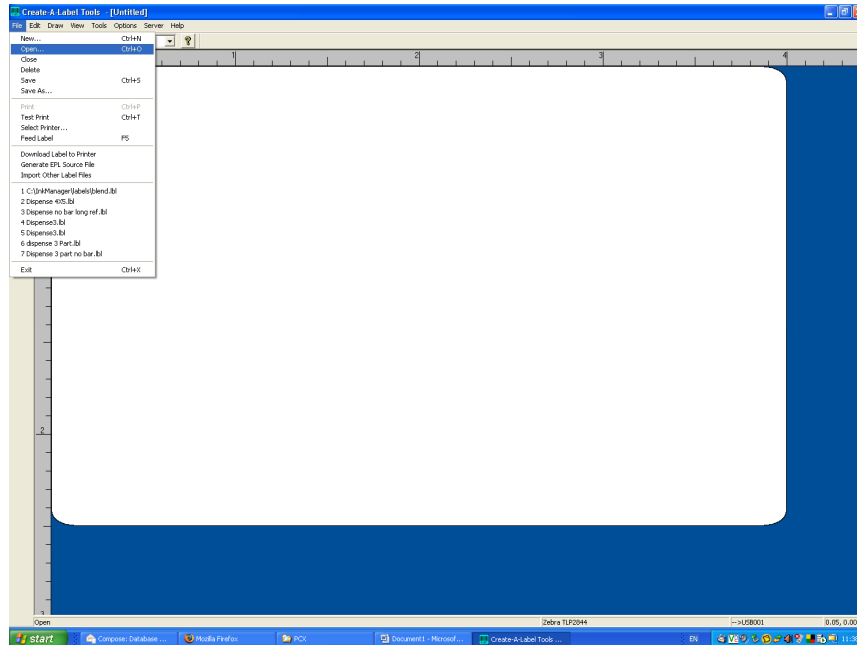
Using a suitable graphics software package create or import your graphic. Here the ISO900 graphic is being used in Microsoft Paint. Save the file as a .bmp or pcx format file in the Create-A-Label directory, the CAL3V306/PCX folder is the default install path and is used in this example as shown below:



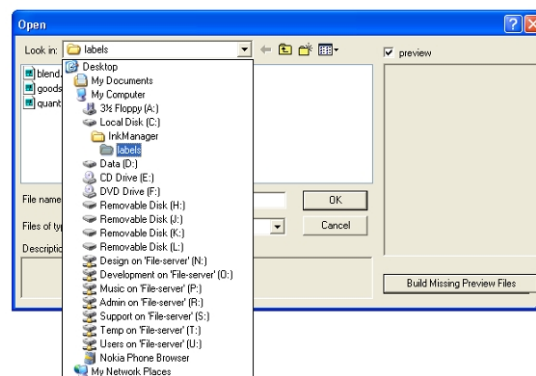
Close the graphics package and launch Create-A-Label as shown:



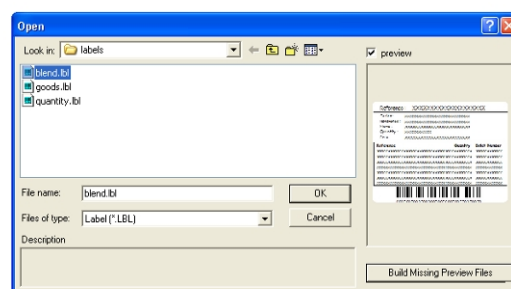
Open the label file to be modified in Create-A-Label as shown below, if the location of the file in use is not known, check which file is being used in the Reports screen of InkManager, see the TLP2844 Configuration in InkManager procedure if in doubt:



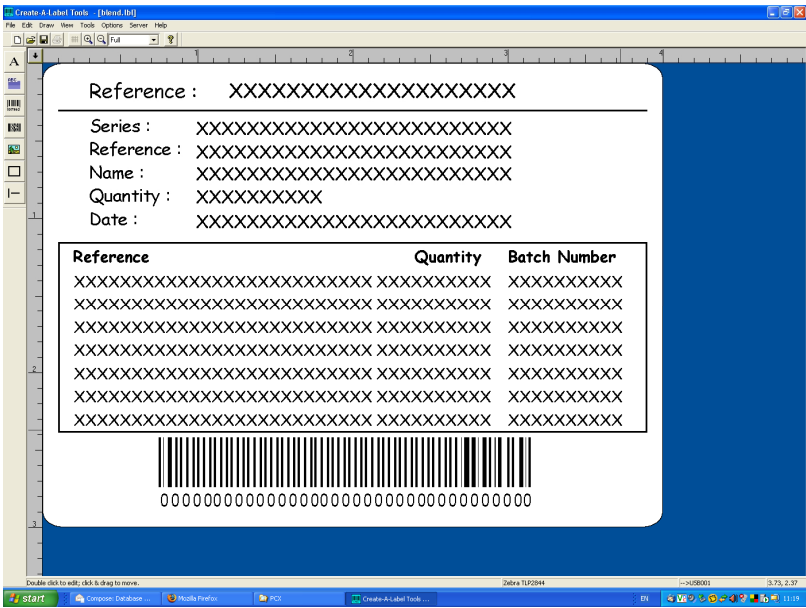
The default file Blend.lbl in the InkManager/Labels directory is used in this example:



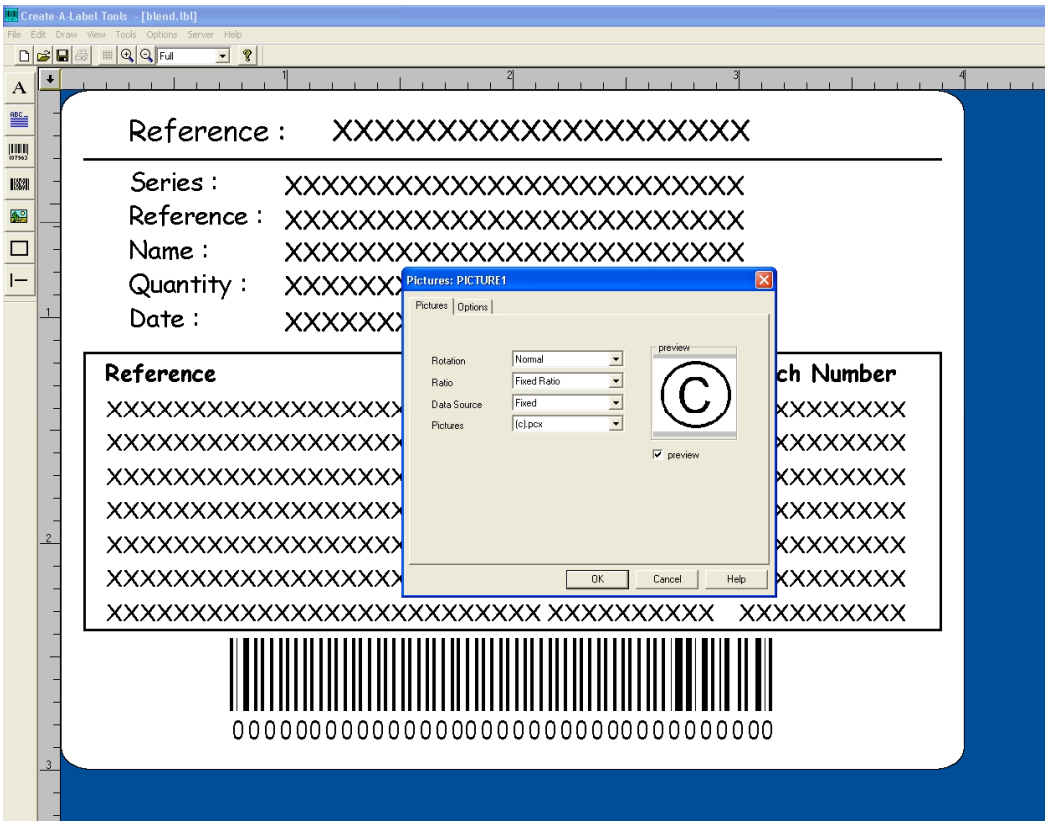
Open the file:



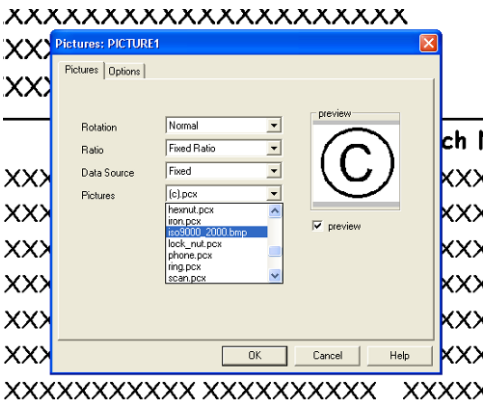
The label file will appear as shown with all data fields as XXXX's, do not change these as you may loose information previously printed.



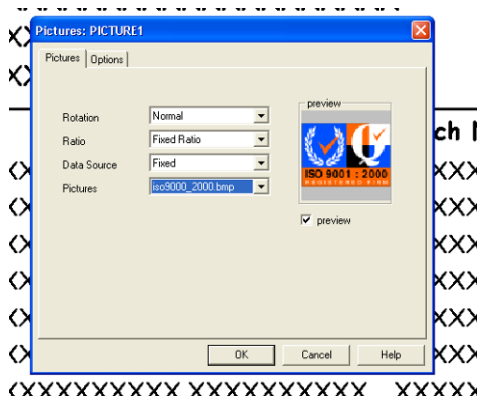
Use the Pictures tool on the left to open the Picture Window, as shown:



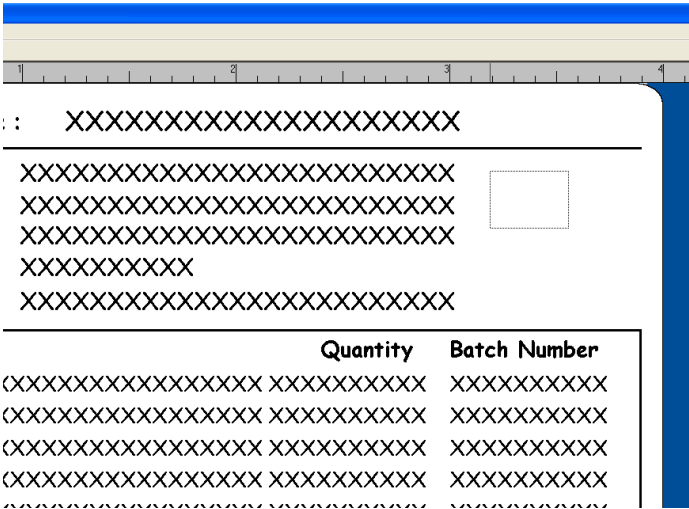
Having previously saved the file into the PCX directory, it will show up in the Pictures drop down menu as shown:



Select the file, a preview can be seen if the Preview check box is ticked as shown, click on Ok to open the file:



An outline box will appear in the top left corner, move the outline to the position required for the graphic and left click the mouse to insert the graphic at this location as shown:



The graphic will be inserted in the position required as shown:

ference: XXXXXXXXXXXXXXXXXXXXXXXX

ies: XXXXXXXXXXXXXXXXXXXXXXXX

ference: XXXXXXXXXXXXXXXXXXXXXXXX

ne: XXXXXXXXXXXXXXXXXXXXXXXX

antity: XXXXXXXXXX

te: XXXXXXXXXXXXXXXXXXXXXXXX

ence	Quantity	Batch Number
XXXXXXXXXXXXXXXXXXXXXXXXXXXX XXXXXXXXXXXX	XXXXXXXXXX	XXXXXXXXXX
XXXXXXXXXXXXXXXXXXXXXXXXXXXX XXXXXXXXXXXX	XXXXXXXXXX	XXXXXXXXXX
XXXXXXXXXXXXXXXXXXXXXXXXXXXX XXXXXXXXXXXX	XXXXXXXXXX	XXXXXXXXXX

The Graphic can be moved with the mouse by left clicking and holding on the image while moving the mouse to position it, and re-sized using the drag handles in the corners.

Create A Label Tools - [blend.lib]


File Edit Draw View Tools Options Server Help

ISO 9001 : 2000

Reference : XXXXXXXXXXXXXXXXXXXXXXXX

Series : XXXXXXXXXXXXXXXXXXXXXXXXXXXX
 Reference : XXXXXXXXXXXXXXXXXXXXXXXXXXXX
 Name : XXXXXXXXXXXXXXXXXXXXXXXXXXXX
 Quantity : XXXXXXXXXX
 Date : XXXXXXXXXXXXXXXXXXXXXXXXXXXX

Reference	Quantity	Batch Number
XXXXXXXXXXXXXXXXXXXXXXXXXXXXXXXXXX	XXXXXXXXXX	XXXXXXXXXX
XXXXXXXXXXXXXXXXXXXXXXXXXXXXXXXXXX	XXXXXXXXXX	XXXXXXXXXX
XXXXXXXXXXXXXXXXXXXXXXXXXXXXXXXXXX	XXXXXXXXXX	XXXXXXXXXX
XXXXXXXXXXXXXXXXXXXXXXXXXXXXXXXXXX	XXXXXXXXXX	XXXXXXXXXX
XXXXXXXXXXXXXXXXXXXXXXXXXXXXXXXXXX	XXXXXXXXXX	XXXXXXXXXX
XXXXXXXXXXXXXXXXXXXXXXXXXXXXXXXXXX	XXXXXXXXXX	XXXXXXXXXX
XXXXXXXXXXXXXXXXXXXXXXXXXXXXXXXXXX	XXXXXXXXXX	XXXXXXXXXX
XXXXXXXXXXXXXXXXXXXXXXXXXXXXXXXXXX	XXXXXXXXXX	XXXXXXXXXX



00000000000000000000000000000000

When happy with your new label. Click save and close Create-A-Label. If you change the file name using Save As, point to the new file name in Reports in InkManager to print the new label from the Print Label button on a Dispense or Blend window. Use the ‘TLP2844 Configuration in InkManager’ procedure if in doubt. The above mentioned procedures are available from the Notes and Guides section of the Vale-Tech Ltd Technical Support website, go to support.vale-tech.co.uk (no need for www).