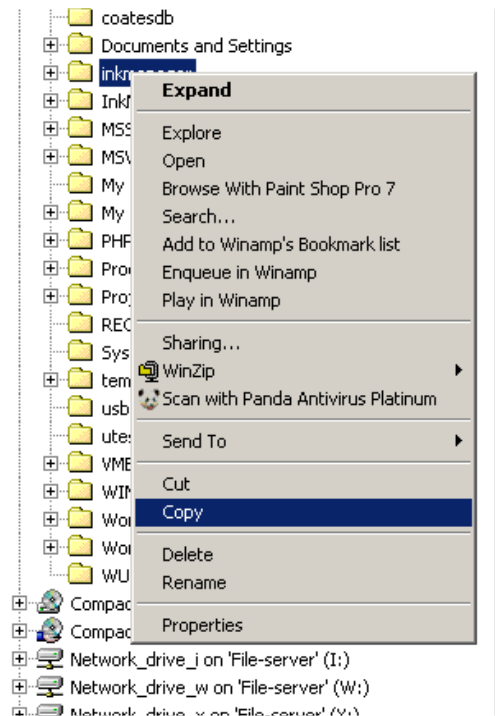


Instructions for Installing an InkManager Patch.

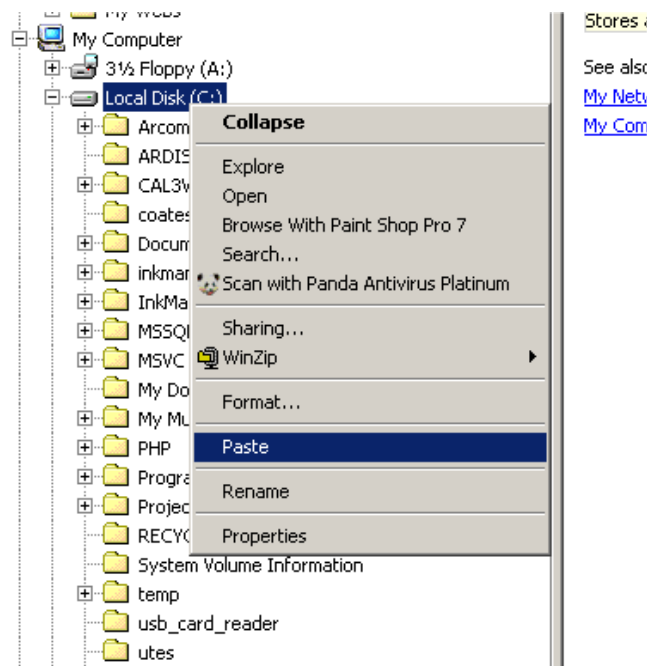
Before installing an InkManager patch, the original installation and settings should be backed up along with the database immediately prior to the upgrade. This will enable the system to be restored in the event of upgrade failure.

Back up the InkManager Directory

Open 'Windows Explorer', expand 'Local Disk (C:)' and right-click on the folder named 'InkManager'. Now click copy from the menu.



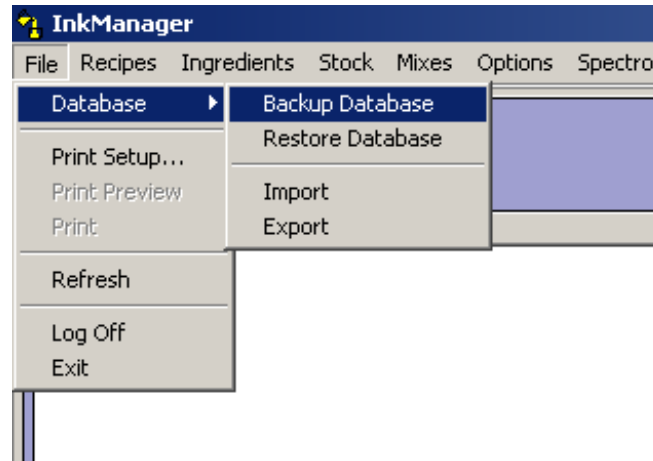
Now right-click on 'Local Disk (C:)' and select paste.



Backup The InkManager Database

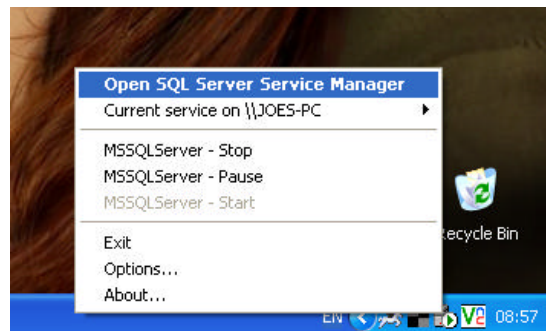
A backup of the InkManager database should now be made. Depending upon the number of series and formulas that are stored will determine how many floppy disks will be required, however a good starting point is 2. These do not have to be blank as InkManager will format them as required.

Start InkManager and select 'File->Database->Backup' from the menu. Follow the on-screen instructions.

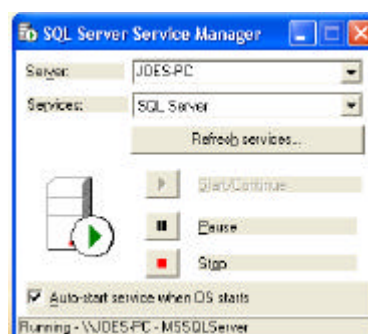


If InkManager is no longer running or unable to log onto database messages are seen, backup the database as follows:

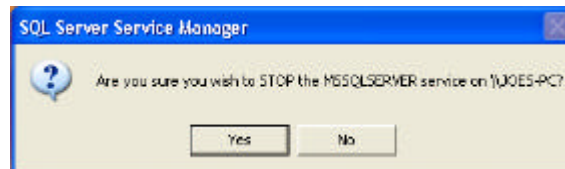
Right click on the MSSQLServer icon in the system tray and select 'Open SQL Server Service Manager' from the top of the menu as shown:



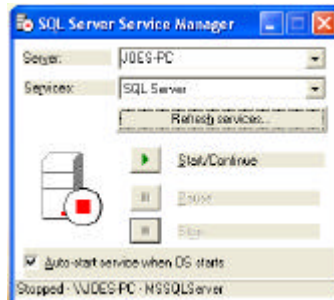
The Service Manager Window will open, check that the Services drop down menu is showing SQL Server as shown below:



Left click on the 'Stop' icon to temporarily stop SQL Server, a message will display requesting confirmation, click Yes:



After a few seconds the SQL Server icon will change:

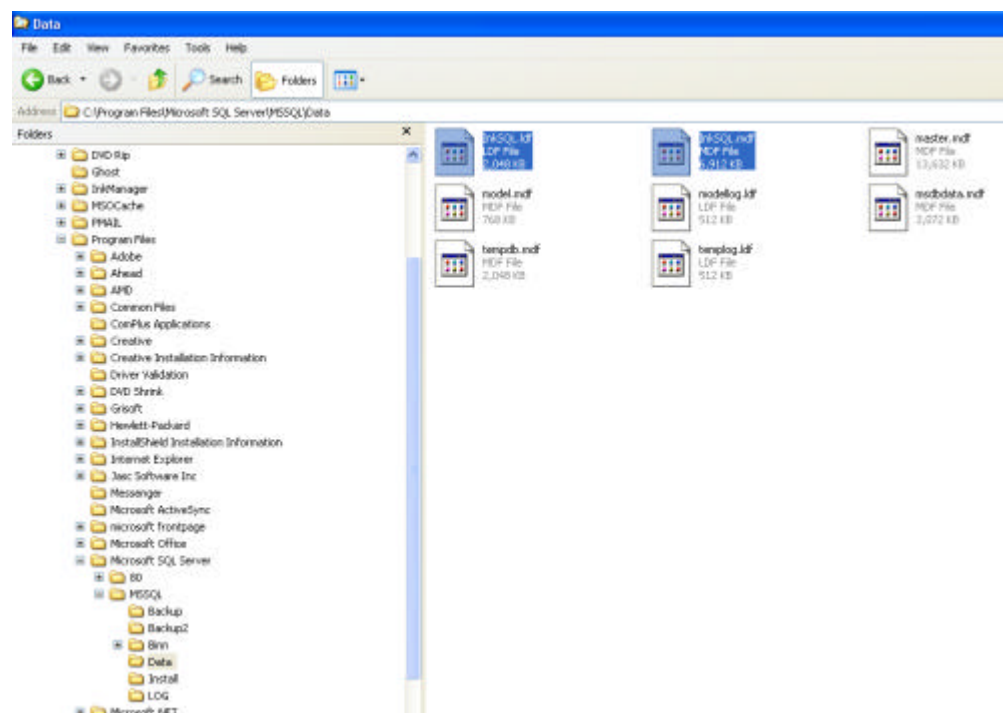


Using Windows Explorer locate the files INKSQL.MDF and INKSQL.LDF, these can be found in one of two directory structures, for older InkManagers and upgraded InkManagers they can be found in:

C:\MSSQL7\DATA

In new installs they can be found in:

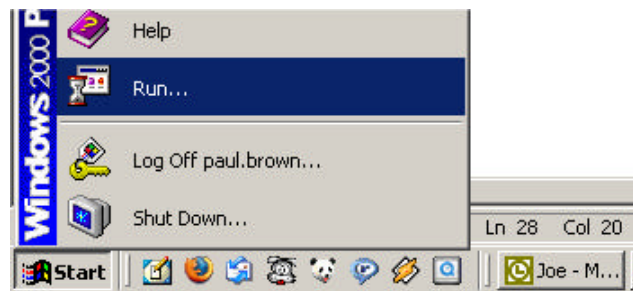
C:\Program Files\Microsoft SQL Server\Data
As shown below:



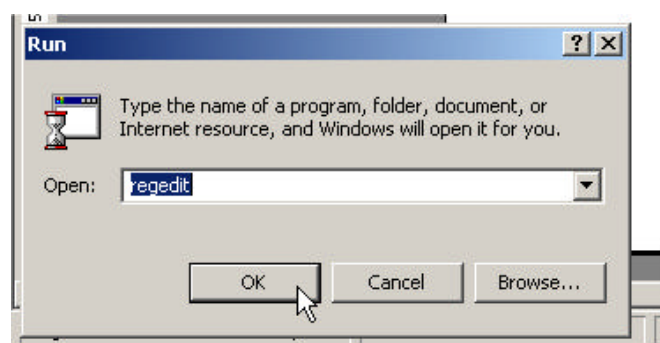
Copy the two files onto a Flash Drive or another Hard Drive location such as the Vale Tech Support directory. Close Explorer and start SQLServer by clicking on the Start button from the SQL Server Service Manager window, then close the window.

Backup the InkManager registry

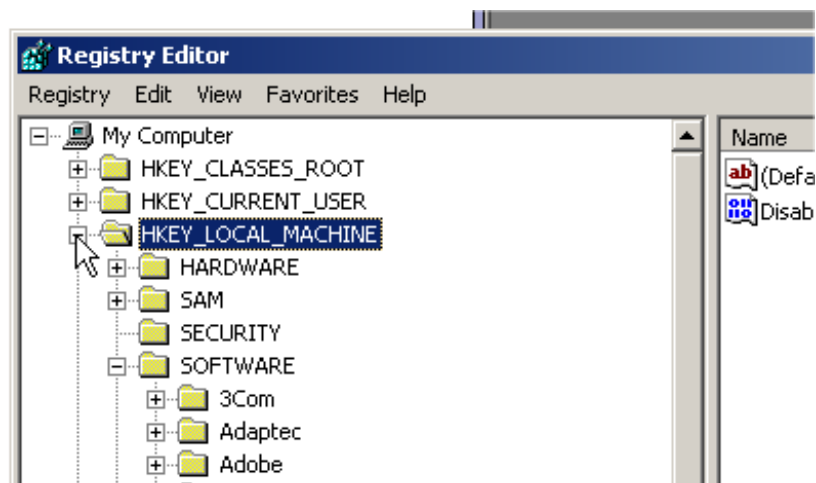
Click 'Start->Run '



Type 'regedit' and click Ok.



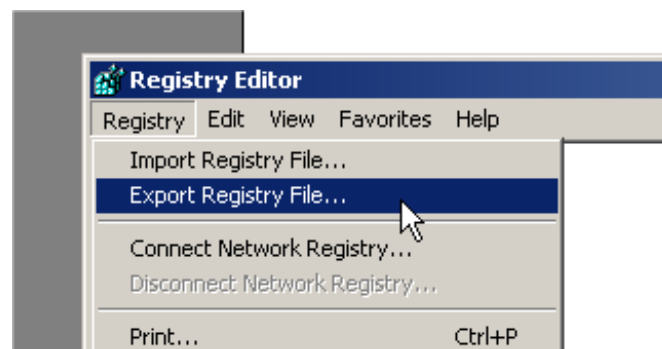
In the right-hand pane of the registry editor, click on the '+' sign at the side of the entry labelled 'HKEY_LOCAL_MACHINE', this will expand the folder.



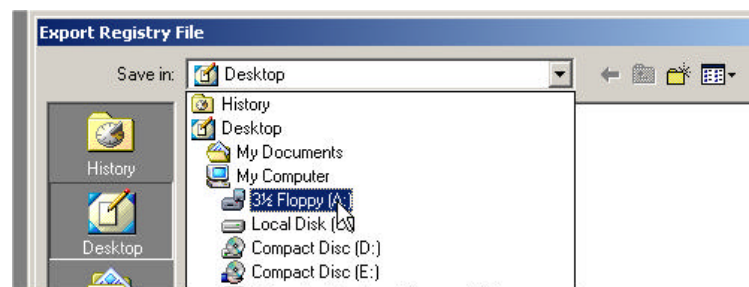
Next expand the folder labelled 'Software', followed by 'Vale-Tech Applications', Followed by 'InkManager'. Left click on the folder labelled InkManager which should highlight in blue.



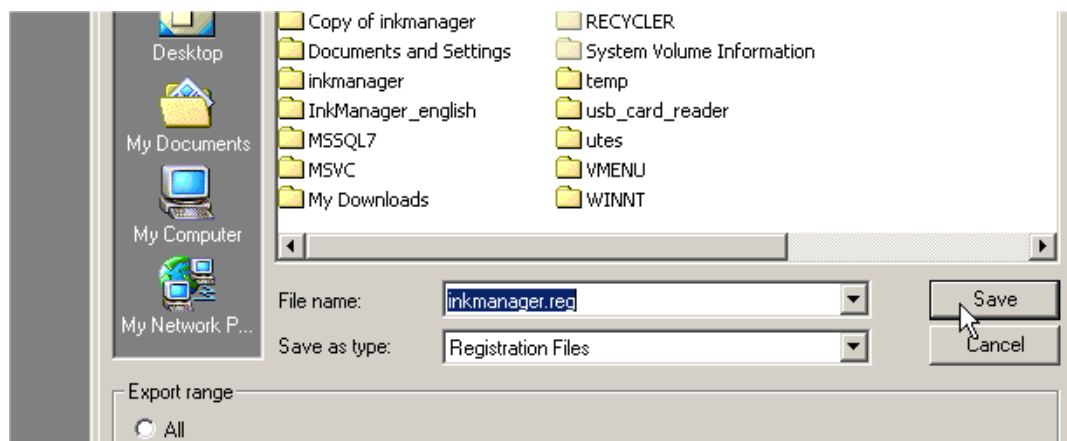
From the file menu select 'Registry->Export Registry File'



Place a blank floppy disk in the drive and in the 'Save in' menu select 'Floppy Disk A:'.



Left click in the 'file name' box and type 'inkmanager.reg' and click 'Save'. Close down the registry editor.



Installing the patch

The patch should be in form of a '.exe' file named something similar to 'Inkman.exe'. Using Windows Explorer, copy the file (from whatever form of storage you have the file saved on) onto drive C: on the computer. Next Run the file by double clicking it from within Explorer.

