

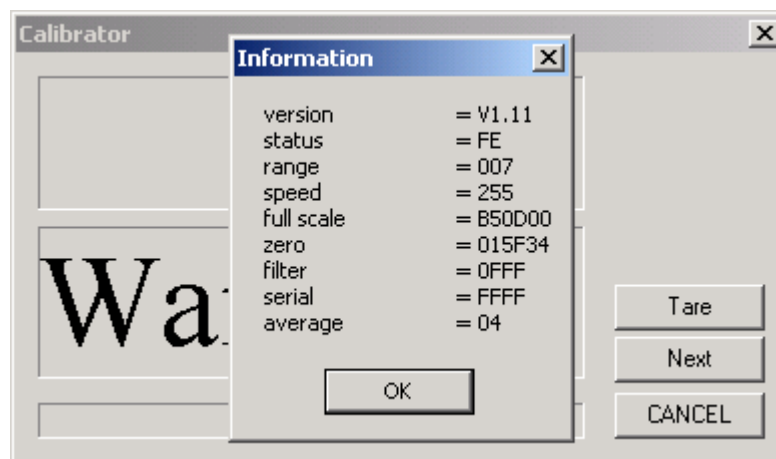
## **Technical Bulletin #15 Using HyperTerminal software to verify PC Communication from the Scale Board**

Note: If the Scale Board is fitted with the V1.11 PIC IC then additional settings will be required, in order that the Scale Board is requested to communicate. To find out what Version is installed, please perform the following:

In **InkManager** go to **OPTIONS** then **SETTINGS**

Now select **SCALE CALIBRATION**

The following Window will appear, The Version is shown at the top of the Window



To exit the “Information Window” click **OK**

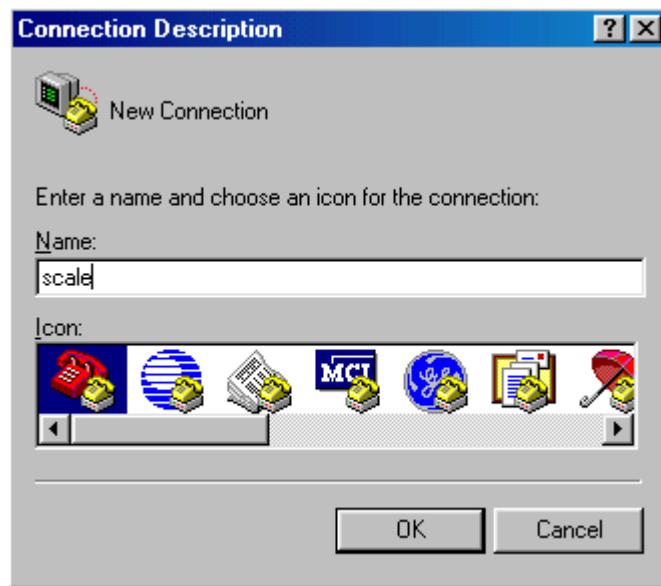
To exit the “Calibrator Window” click the **CANCEL** button, or click on the **X** in the top right hand corner of the Window

**Before attempting to use HyperTerminal, Please close any applications that are running i.e. InkManager and Laplink**

- From the PC Desktop go to

**Start/Programs/Accessories/Communications/HyperTerminal**

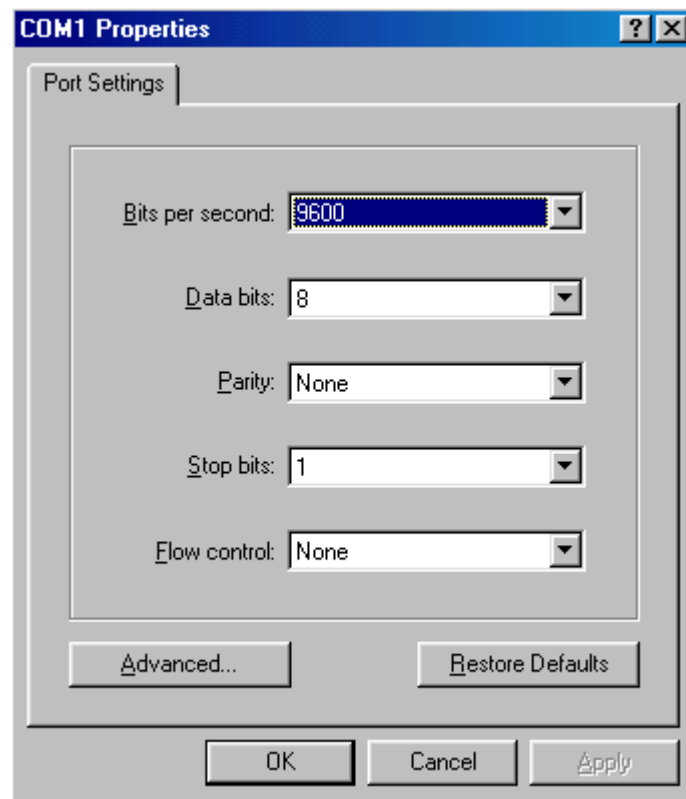
- If a HyperTerminal Folder with Scale.th in it is present, click on the Scale.ht icon, if not:
- Run **Hypertrm.exe**



- Give it a name i.e. **Scale** and then click OK



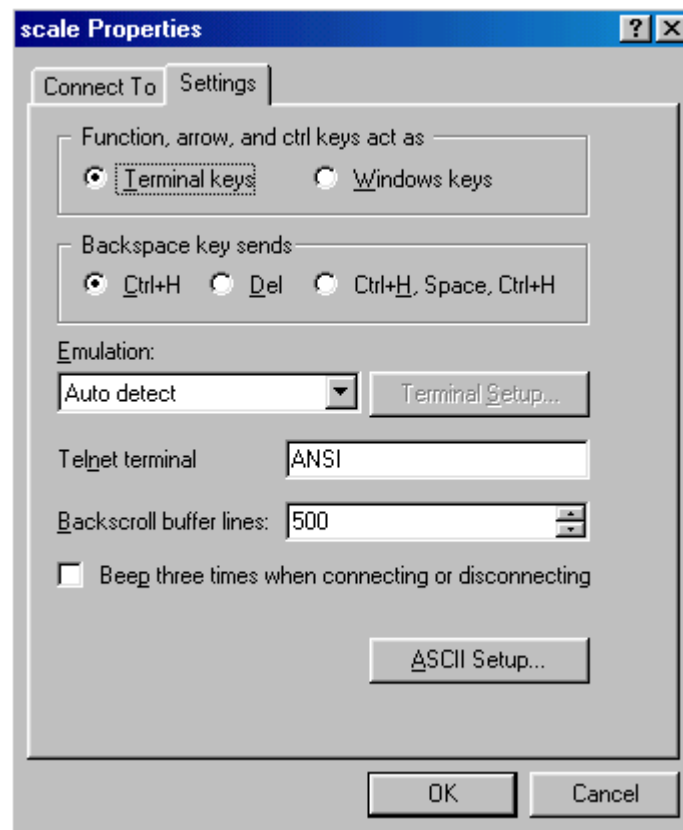
- Find **Connect using**, Use pull down menu to select **Direct to Com1** and then click OK



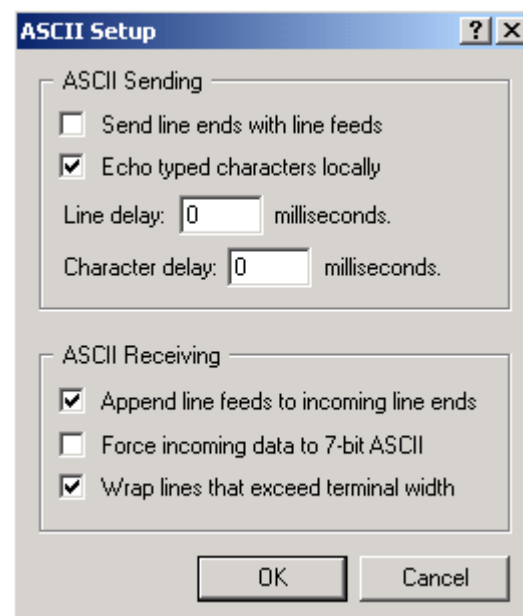
- Use pull down menus to select the following:
- **9600** Bits per Second (Baud Rate)
- **8** Data Bits
- **None** Parity
- **1** Stop Bits
- **Flow Control** Use pull down menu to select **NONE** and then click OK

Note: At this point a Window may appear with data streaming across the page from left to right, ignore this and proceed as below:

- Go to **File** then **Properties** and the Scale Properties Window will now appear



- Select **Settings** Tab
- Click on **ASCII Setup** Button

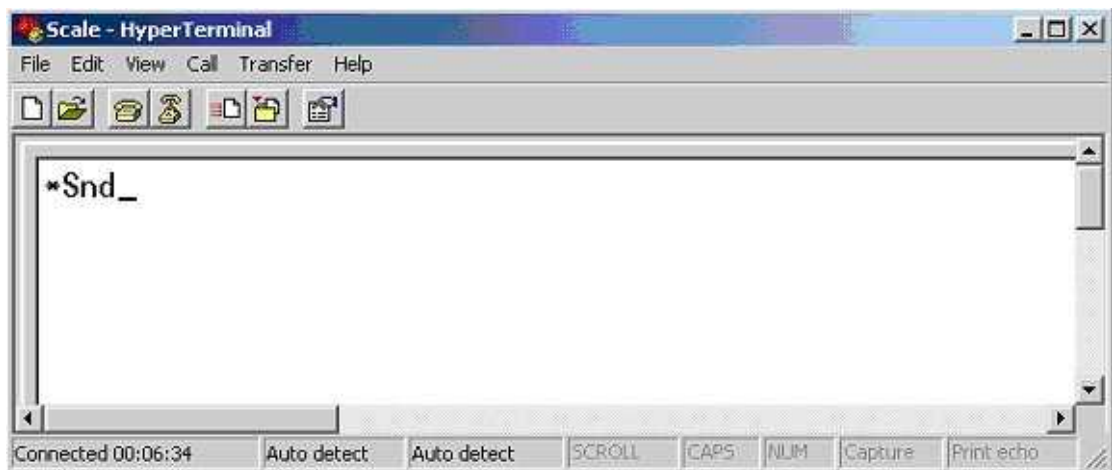


- Go to **ASCII Sending** area
- Place a **Check** (tick/swoosh) in the box for “Echo typed characters locally”
- Go to **ASCII Receiving** area

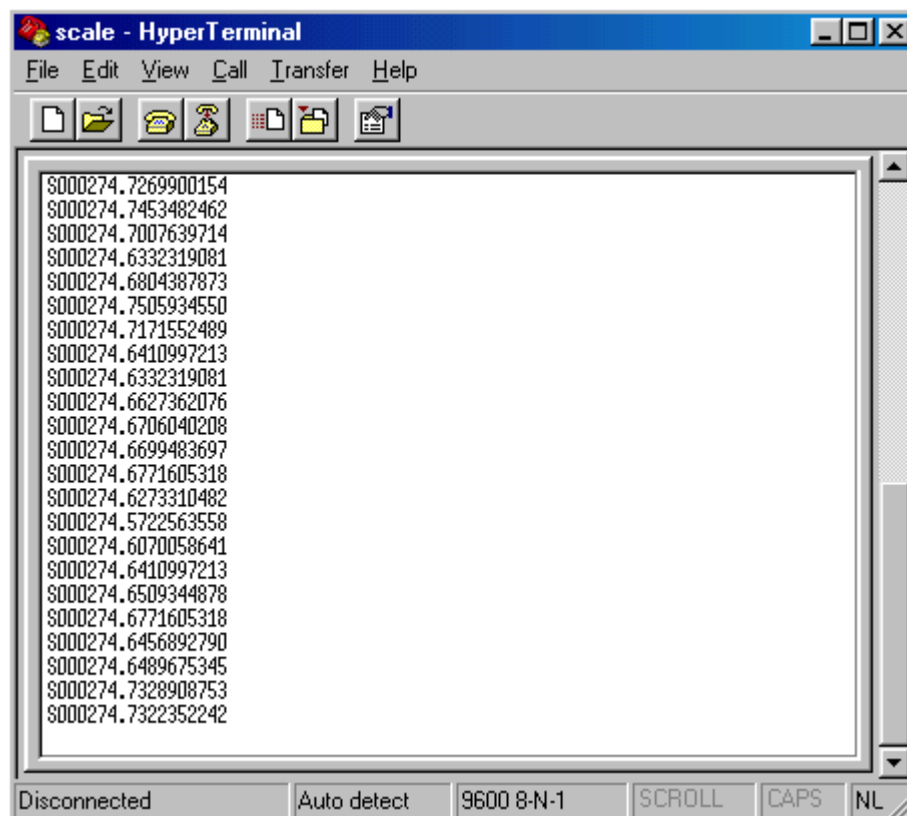
- Place a **Check** (tick/swoosh) in the box for “Append line feeds to incoming line ends” and then click OK
- Click on OK to exit
- Select **CALL** or the **Telephone Icon** to start reading scale data as shown in the example below:

**Note:** In the case of a Scale Board fitted with V1.11

A command line has to be first typed into the Window to request Scale Data, Please type the following: **\*Snd** and press **Enter**.



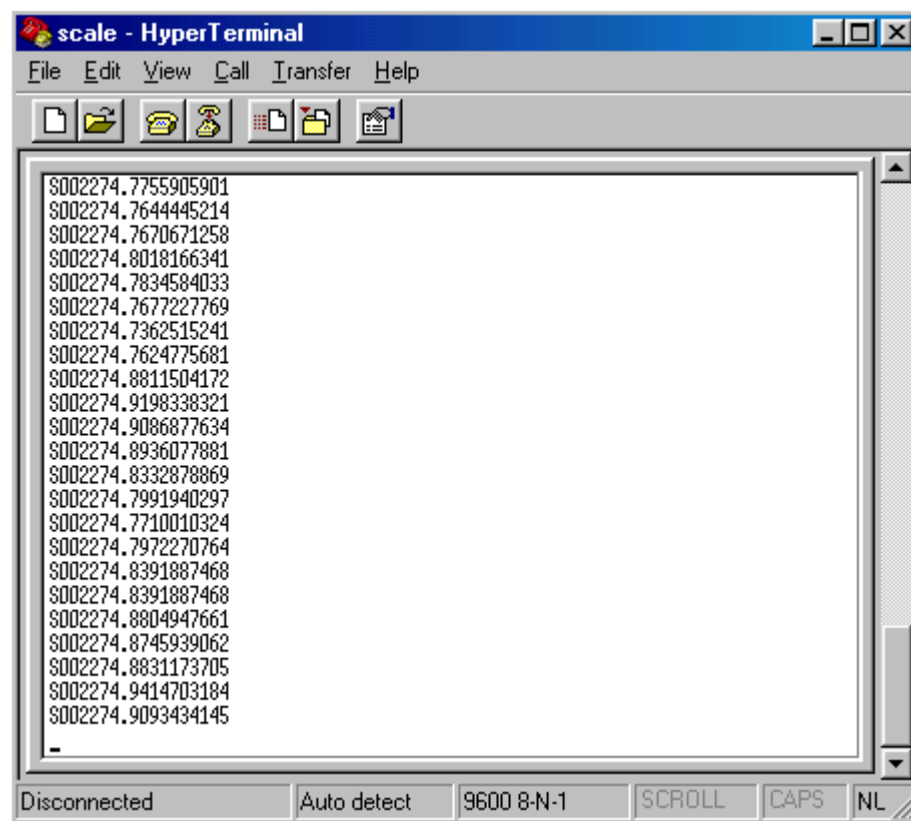
Scale Data shown now be present in the Window



The Left Hand side data column prefix is an **S**

Example: S000274

This denotes that the Scale is **Stable** and followed by weight data, the prefix **S** can sometimes change to become a **U** when weight is removed or applied to the Balance, before becoming stable again.



Example: S0002274

This is the new reading that would be indicated if 2Kg were applied to the Balance.

A prefix of **U** may temporarily indicate an Unstable condition, i.e. when the weigh pan is being moved continuously, or under load conditions.

Any problem with the Scale Board will be either represented by NO weight data in the above window or the word **ERROR U**.

This would clearly indicate a fault condition, to which the Scale Board should be replaced inside the Scale Box of the IDS.

To Exit select **DISCONNECT** or the **Telephone Icon with a raised handset** to stop reading scale data

To Exit HyperTerminal select the **X** (top right of Window) to Close