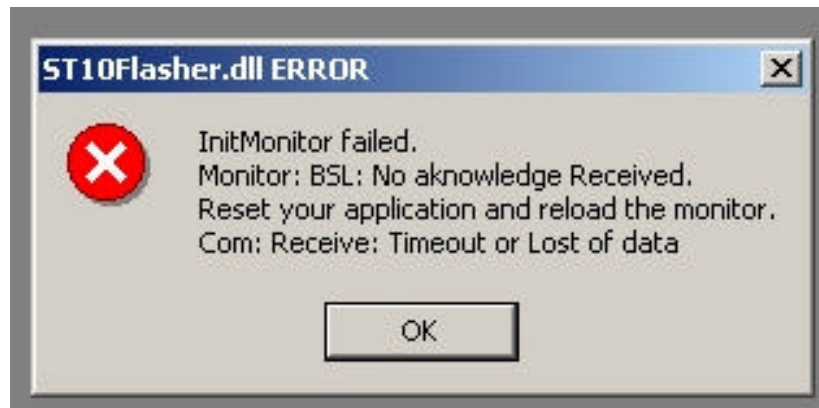


Technical Bulletin #18 IDS software downloading procedure for Control PCB (80C168)

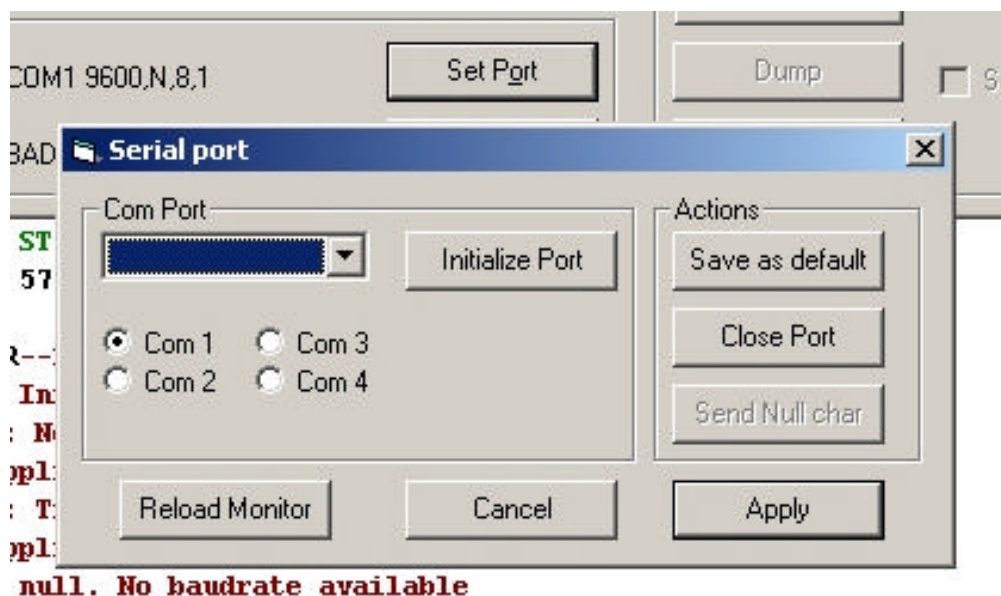
1. On IDS PC, click 'Start->Programs' and select ST10Flasher

You may see the following warn, click 'Ok'



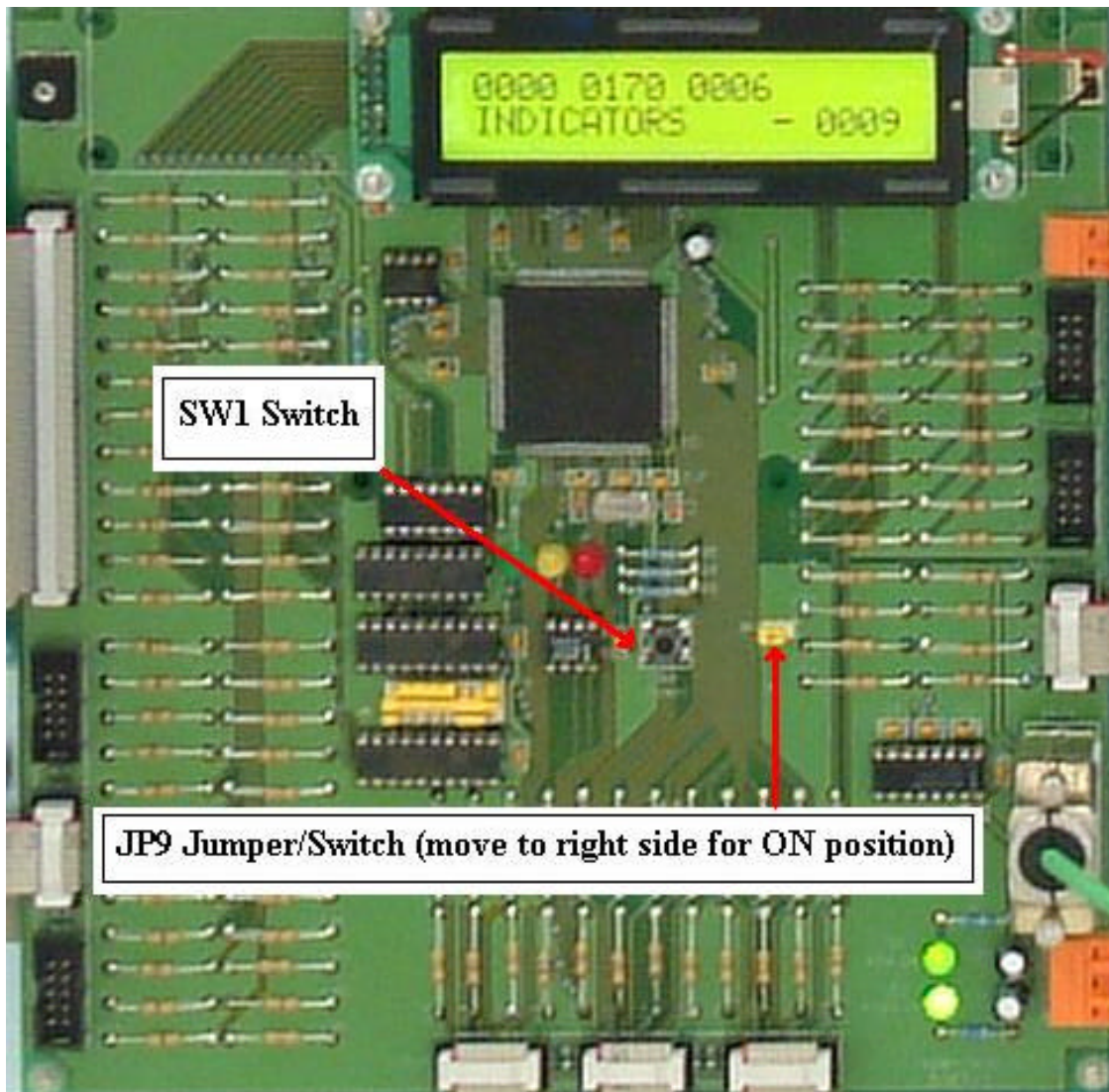
NOTE: Please ensure that you have the original Vale-Tech floppy disk containing the original **B_IDS.HEX** File, before completing the next stage of the download procedure for loading the new File

2. Click on the button 'Set Port'
3. A window will appear (as shown below), click on the required COM port (i.e. 1,2,3 or 4) and then click 'Initialise Port'



4. Location of the IDS Control PCB is in the right hand side cabinet of the IDS. For locating the IDS Control PCB see figure 1 below:

Figure 1. Shows the IDS Control PCB and the location of SW1 and JP9



5. Set **JP9** to **ON** position

NOTE: JP9 on new style IDS Control PCB has a Yellow colored switch, whereas the old style IDS Control PCB has a jumper which is used to connect two of the three vertically mounted pins

6. Press switch **SW1**
7. Click on 'Reload Monitor', if all is well, the 'Apply' button will be enabled, click the 'Apply' button.
8. In the software, where it says 'File to Program', click on the button labelled '...'
9. Browse to where the new file is located, select the required file and click ok.
10. Next click 'Program & Verify'
11. When the programming has completed, On the IDS Control PCB Set **JP9** to **OFF** position
12. Press switch **SW1**
13. The IDS is now reprogrammed with the **B_IDS.HEX** File
14. It is always good working practise to shut down the IDS PC and turn OFF the Mains Power to the IDS after installing new Software, in order for the new Software changes to take full effect.
15. Re-Start the Mains Power to the IDS and the IDS PC
16. Perform a IDS Reset on the machine