

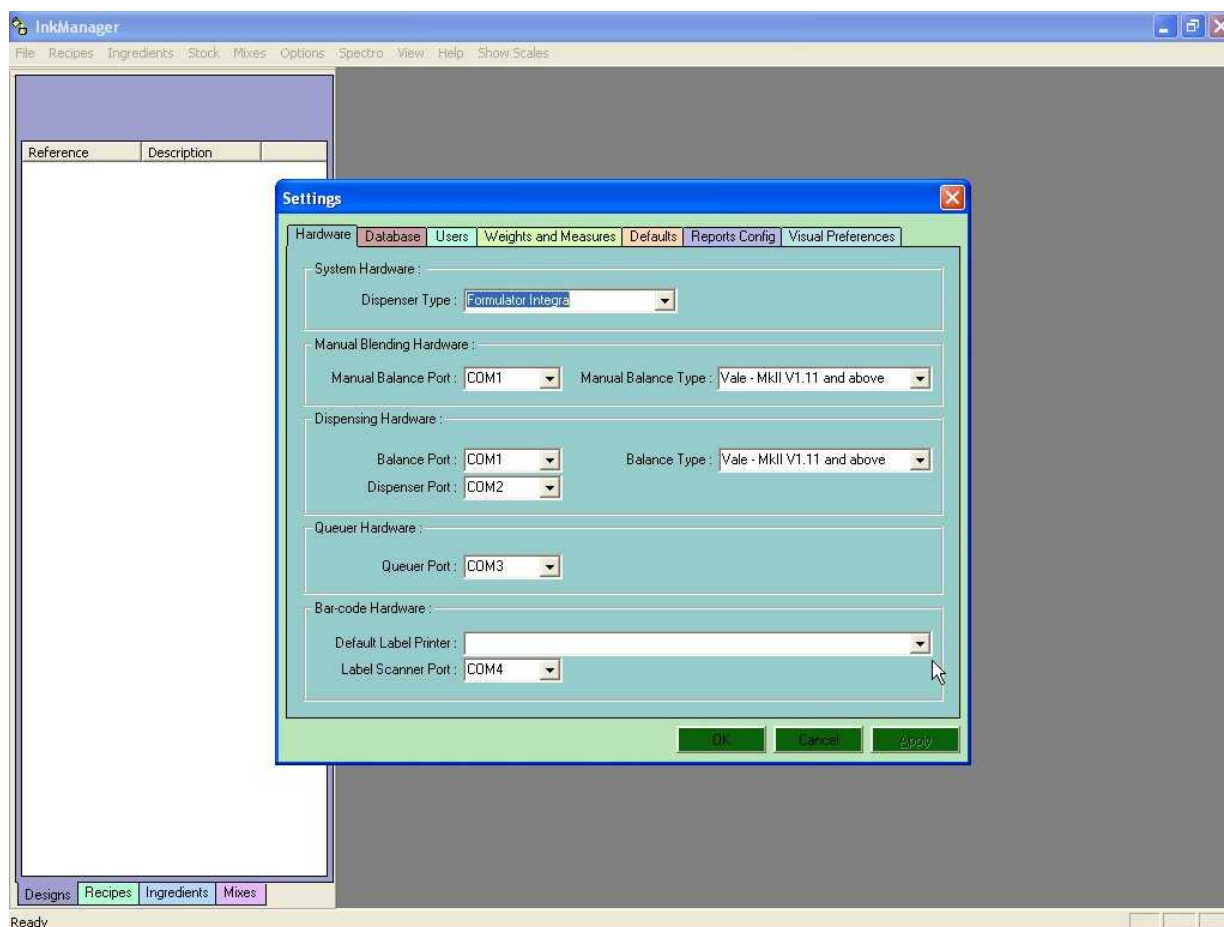
## Technical Bulletin #24 TLP2844 Barcode Printer Configuration for InkManager.

This procedure provides instructions for the configuration of InkManager to use the Zebra TLP2844 Barcode Printer. It does not cover the configuration of the Datalogic Gryphon hand held scanner, which is covered by another procedure.

Install the Zebra TLP2844 Barcode Printer as advised by the manufacturer, usually on the USB port. Install it in the port it will be used on as if it is subsequently plugged into another port, it will be re-detected and request re-installation assigning an new printer name and will require InkManager re-configuring.

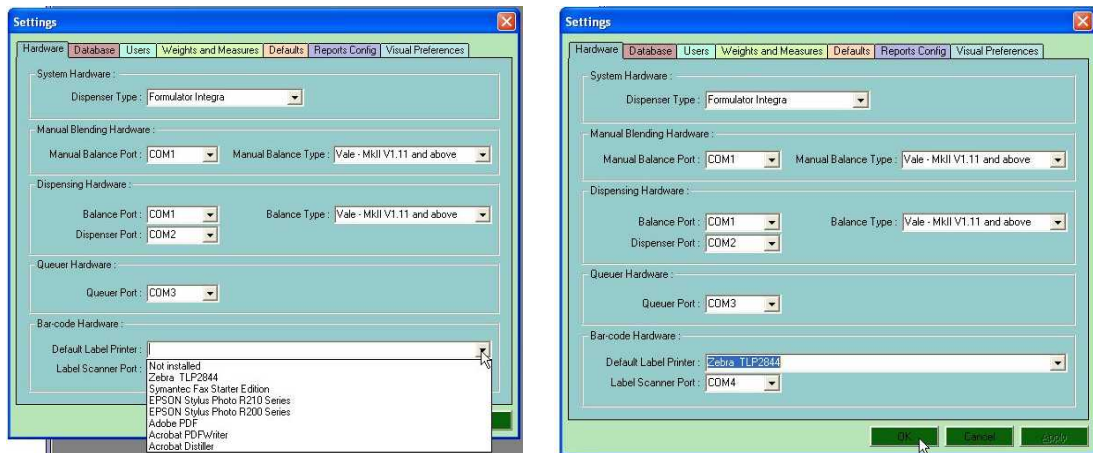
Install Create-A-Label 3 Demo from the Printer Driver disk, if the driver disk does not contain this program contact Vale-Tech for a driver disk that does contain this program.

After successful Printer installation, check in printers that it can be seen or print a test page from it. Launch InkManager and go to Options, Settings, and click on General, the following screen will be seen: (the configuration may be different).

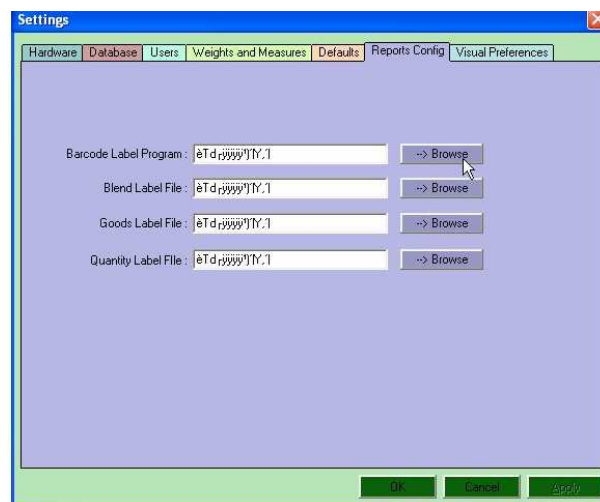


If the Options, Settings, General menu is not available, (greyed out) you do not have privileges to access these settings with your log on, request a manager, IT technician or Site Engineer log on as Administrator or with the appropriate privileges.

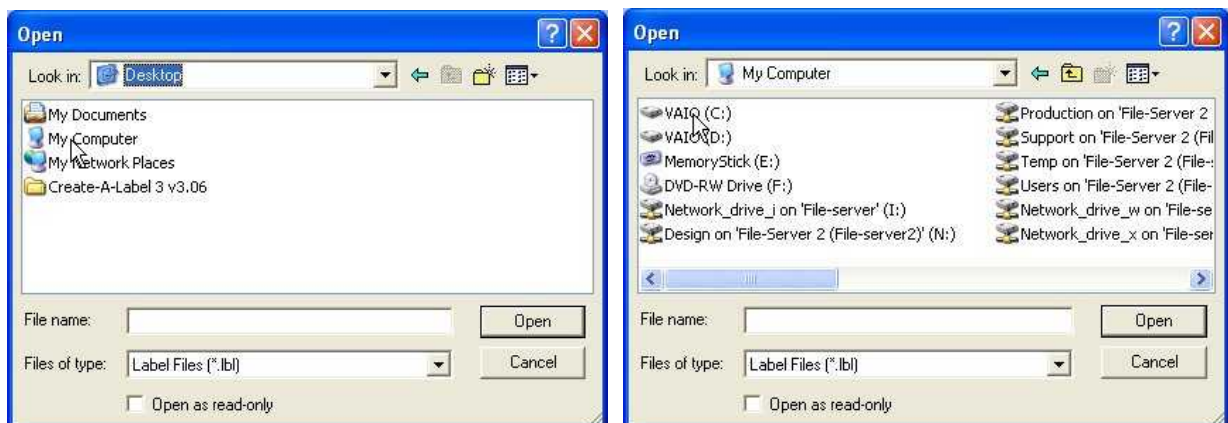
Click on the Default Label Printer drop down list and select the Zebra TLP2844 printer from the list as shown below:

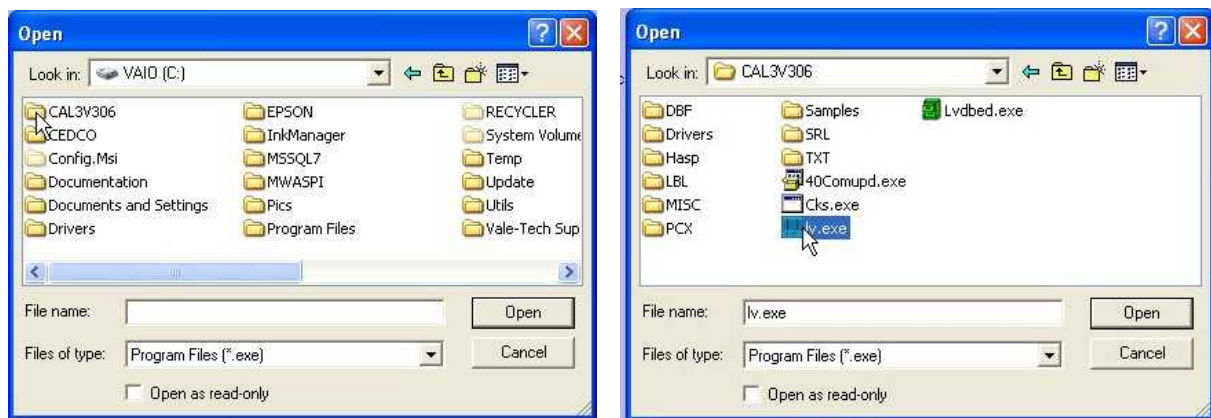


Click on the Report Config tab, the following window will be seen:

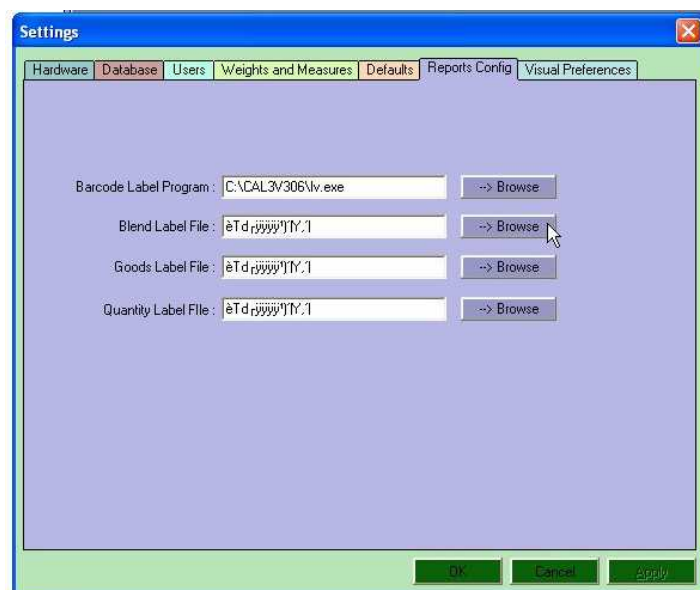


First select the Barcode Label Program by clicking on the Browse button to find the application LV.EXE, this should be in the c:\ in the directory shown below if the default location was used during installation:

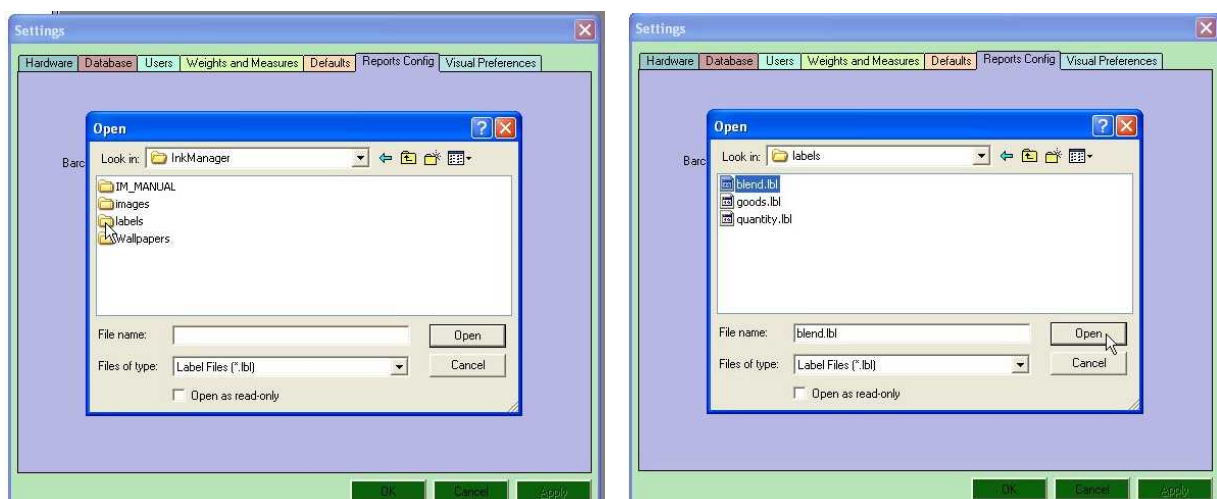




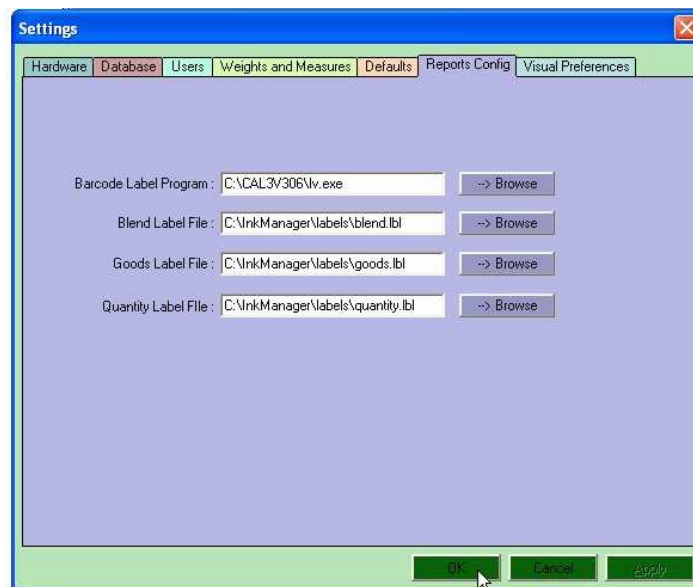
Follow the example above to find the LV.EXE software, select it, click on Open and the following screen will be shown:



Next use the Browse button next to the Blend Label File entry (shown above) to find the Blend label file, these can be found in the InkManager directory in the Labels subdirectory as shown below:

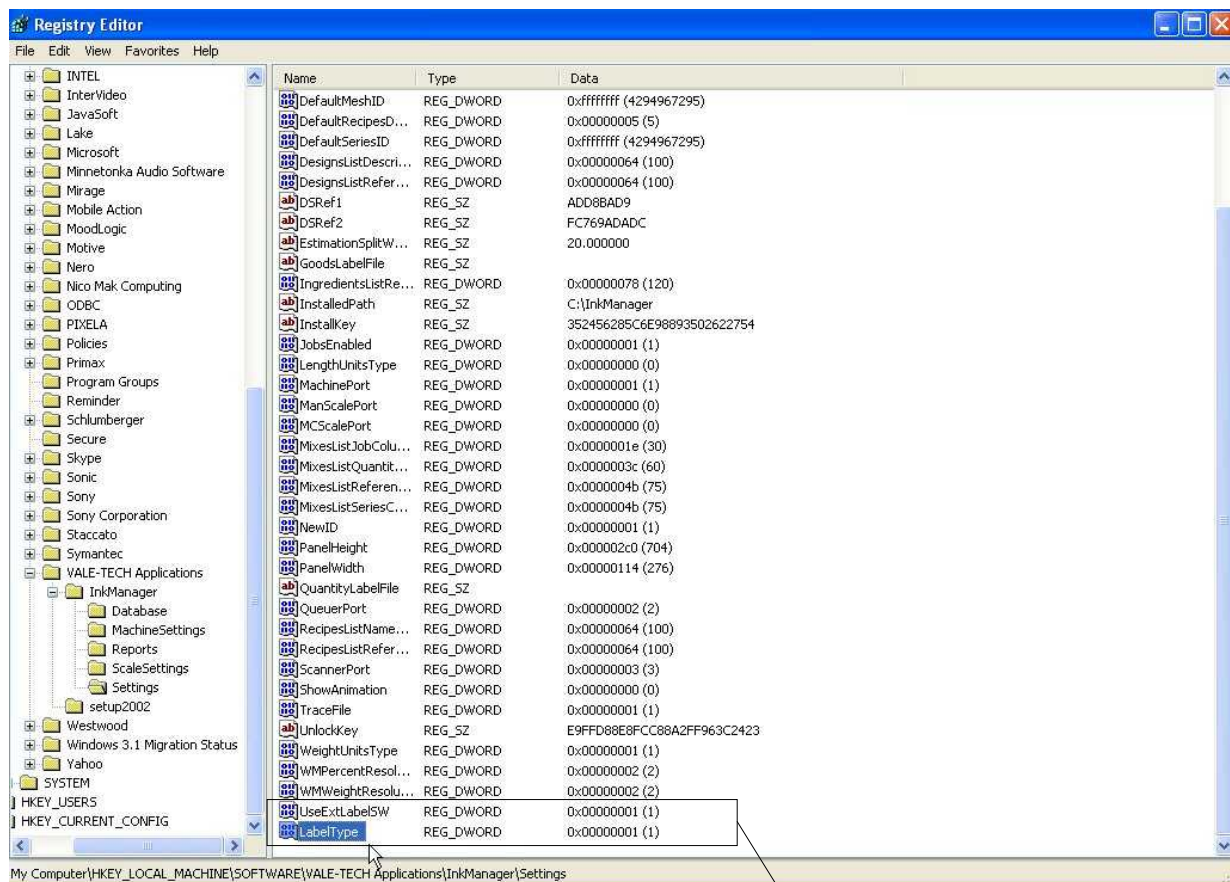


Repeat to assign all the Label files, the Report Configuration screen should look like the example below:



Click OK to save these settings.

Close InkManager and launch Regedit, see the registry setting procedure if you are unfamiliar with Regedit. Create the following two DWORD Values in the Settings folder in Regedit:



The DWORDS are UseExtLabelSW and LabelType, both have values of 1, the entries are case sensitive and must be in the Settings folder of VALE-TECH Applications as shown.

Close Regedit and launch InkManager, Barcodes can now be printed from Blend or Dispense window, and from the Mixes list.

The barcodes provided with InkManager are examples, they may require editing using Create-A-Label to generate the required format for your labels, and your scanner. Variations are available from Vale-Tech Ltd for several label formats, however editing may still be required to provide your specific information.